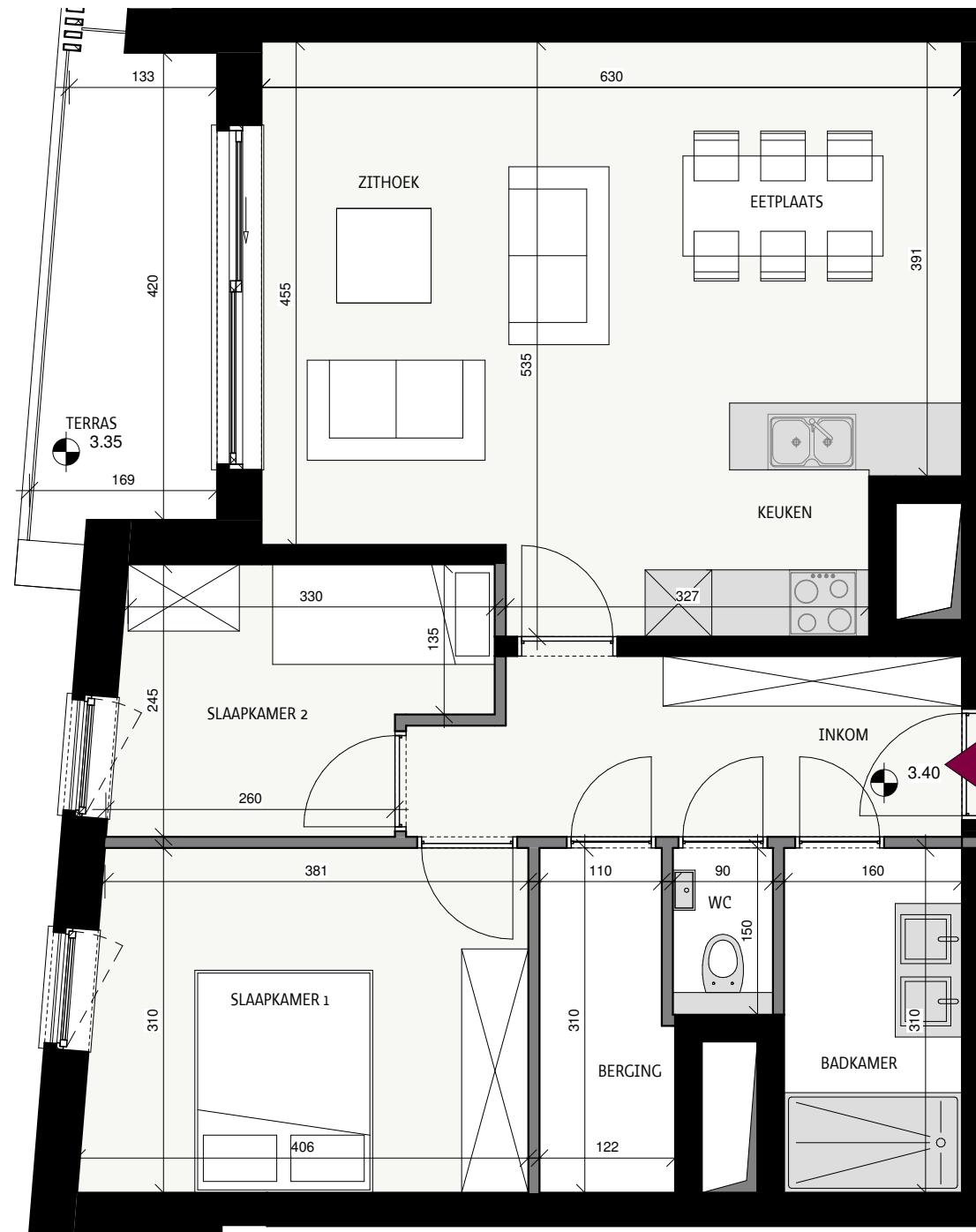


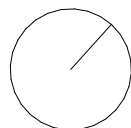
Zephyr

Oostende



Datum:
Handtekening:

Grondplan



Appartement 01.04

Hofstraat 9, 8400 Oostende

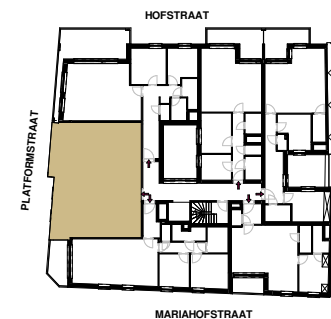
Bruto oppervlakte 82,34 m²
Terras + patio 7,22 m²
Slaapkamers 2
Verdieping verdieping 1



Platformstraat



Situeringplan



Projectontwikkelaar

STEENOVEN
SOLID PROJECT PLANNERS

BV TUMBLEWEED
Kwadestraat 149A bus 3.1
8800 Roeselare

Architect

BUREAU W
architects